

Brewers TOWNER International

How to apply



easy
read

Contents

Page

Introduction 3

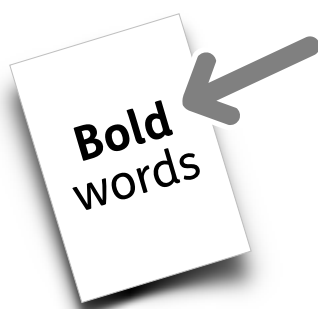
Who can send in their work 5

What will happen if we choose you 7

How to send us your work 10

Questions and answers 15

For more information 18



In this Easy Read document, difficult words are in **bold**. We explain what these words mean in the sentence after they have been used.



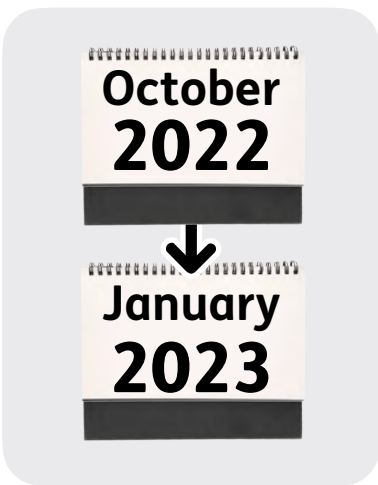
Some words are [blue and underlined](#). These are links which will go to another website which has more information.

Introduction



Brewers Towner International is an **art exhibition**.

An **art exhibition** is when you show art to people, like at an art gallery.



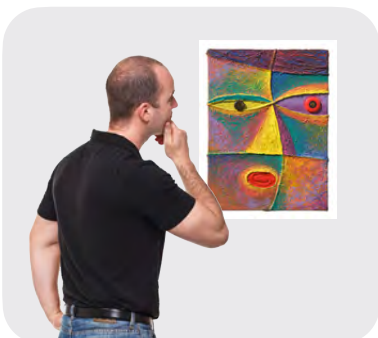
Brewers Towner International will take place at **Towner Eastbourne** from October 2022 to the end of January 2023.

Towner Eastbourne is an art gallery in Eastbourne, in the UK.



The art exhibition will show works of art by artists from around the world.

This information is for artists who would like to show their work at Brewers Towner International.



If you would like to show your work at Brewers Towner International, you will have to send it to us so that we can decide what to show.

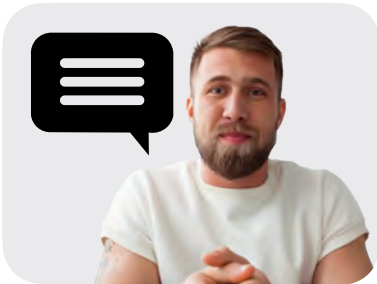


This information will:

- explain who can send in their work.



- explain what you need to do to send in your work.

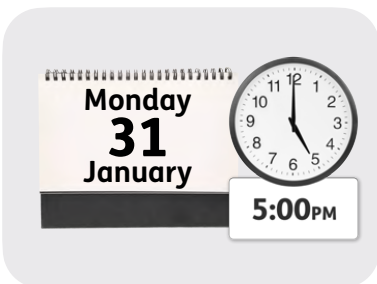


- answer some questions that a lot of people have asked us.



You can send in your work by clicking on this link:

townergallery.typeform.com/BTI2020



If you want to send in your work, you must do it by 5pm UK time on Monday 31 January 2022.



If you live in a different country to the UK, 5pm UK time might be a different time for you.

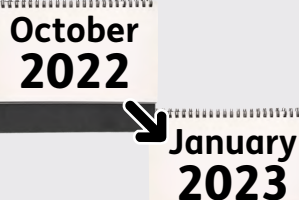
Who can send in their work



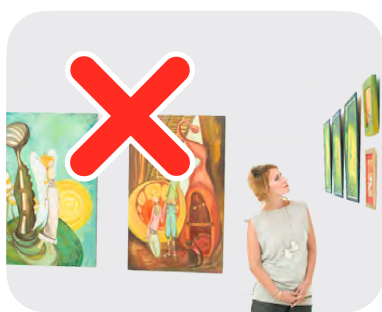
You must be over the age of 18 to show your work.



The art you would like to show must have been finished in the last 2 years.



You must be able to show your art from October 2022 to January 2023.



You cannot show your art if your art was chosen for Towner International 2020 - this is so we show work by as many different artists as possible.



You can send us your work if you work in a group.



If you work in a group, please:

- include the names of all the artists in the group.



- give us the information of 1 person we can get in touch with.

What will happen if we choose you



If we choose to include your art in the exhibition, we will decide together when we will:

- bring your art to Eastbourne.
- set it up in the gallery.



We may use pictures of your art:

- to send to newspapers.
- on posters.



This will be to get people to come to the exhibition.



People who come to the exhibition will be allowed to take pictures of your art.



If someone buys the art you send to us, we will take 35 **percent** of the money.

Percent means out of 100.



For example, if someone buys your artwork for £100, we will take £35.



We will support you by:

- paying you an Artist Fee of £350.



- paying for and organising for your work to be taken to and from the exhibition.



- setting up your art in the gallery.



- giving you some money to come to the exhibition opening.



- giving you photographs of the exhibition.

How to send us your work



To send us your work, you will need to fill out the online entry form.



You can find it by clicking on this link: townergallery.typeform.com/BTI2020



You will need to give us information about how to get in touch with you.



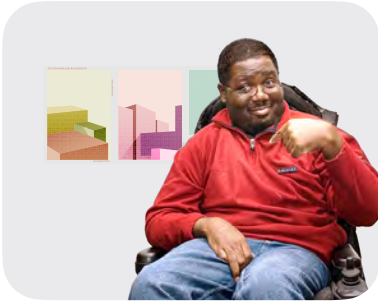
You will also need to give us 3 documents:

- A CV. This is a document that explains:
 - the work you have done.
 - where you went to school or university.



In your CV, please also tell us:

- a little bit about yourself.



- about exhibitions you have taken part in.

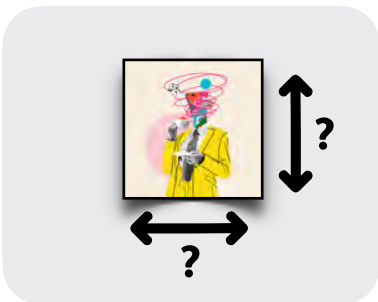


- Your submission - this is the art you want to enter. Please include:

- the title of the art work.



- the date that you finished it.



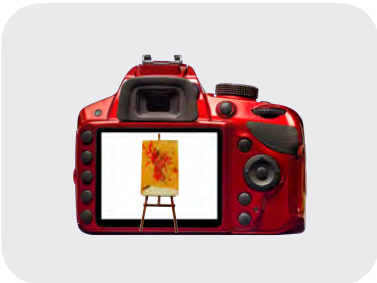
- exactly how big it is.



- what it is made of. For example, oil paint, canvas, ink or paper.



- a description of the art.



- pictures of the art.



- anything you might need us to do to set up your art work.



- information about whether your art work is designed to be set up in a particular place.



You can send more than 1 art work.



- A portfolio - this is pictures of some other art you have done in the past.

You can only send us computer files that are:



- PDF documents.



- Microsoft Word documents.

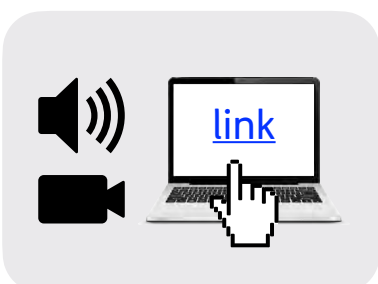


We can't open other types of computer file.



Your computer files must not be larger than 10 **megabytes (MB)**.

A **megabyte (MB)** is a way of measuring how big a computer file is.



If you want to send art that uses sound or video, please send a link that we can click on. You should put the link in your submission document.



If we need a password to see your work, please include it.



The last page of the online form will tell you that we have received your work.



You will not get an email from us to tell you we have received your work.

Questions and answers



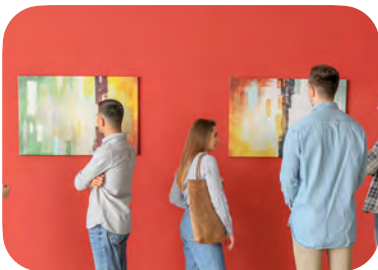
Here are some questions that people have asked us, and answers to those questions:

How many artworks can I send?



You can send as many artworks as you like.

Can I send in diptychs or triptychs as 1 work?



Diptychs are when 2 paintings make up 1 piece of art.



Triptychs are when 3 paintings make up 1 piece of art.



You can enter diptychs or triptychs.

Please make sure you send us a photo that shows all of the work together.

How many pictures of my art can I send?



You can send as many pictures of your art as you want in your:

- submission.
- portfolio.

Does my artwork need to be for sale?



No, you do not need to sell your artwork.

When will I know if my work is being included in the exhibition?



We will let everyone know by email on Monday 11 April 2022.

Will you give me feedback on my work if it is not chosen to be included?

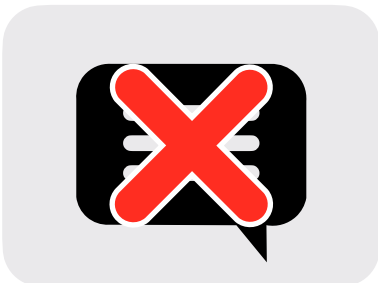


Feedback is when we tell you:

- what we liked about your work



- what we thought could be better.



We can't give feedback on your work.
This is because so many people enter.

For more information



You can email us if:

- you have more questions.



- you have accessibility requirements - this means we need to do something to make sure you can take part.

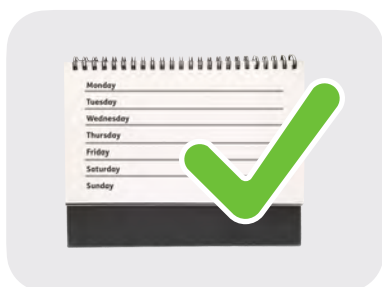


- you would like to send us your application in a different way.



Please email us at:

programme@townereastbourne.org.uk



We will try and reply to you within 1 week, so please make sure you email us at least a week before the deadline.



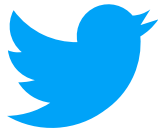
For news about Brewers Towner International, please join our mailing list here:

- [Mailing list](#)

You can also follow us on:



- [Instagram](#)



- [Twitter](#)



- [Facebook](#)



You can visit our website at:

- www.townereastbourne.org.uk

This Easy Read information has been produced by easy-read-online.co.uk